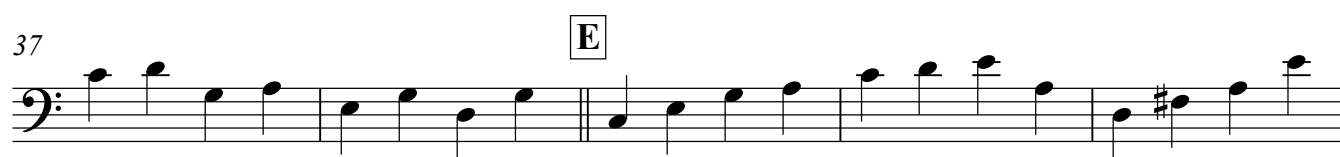
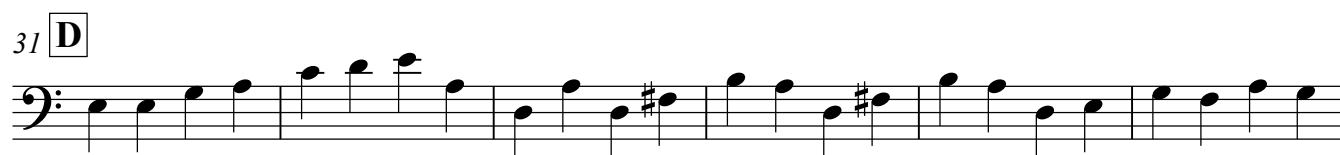
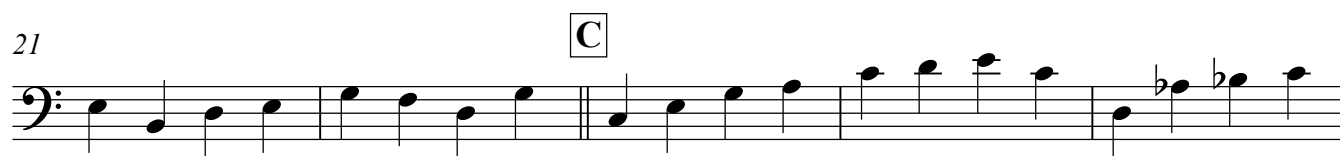


## Take the "A" Train

21

Billy Strayhorn

♩ = 152





89

Repeat 3 xs

L<sub>E♭</sub>

95

Fm<sup>7</sup> B♭ E<sup>9</sup> E♭ Fm<sup>7</sup> B♭<sup>7</sup>

97

103

2

The image shows the bass line for the song 'The Sound of Silence' by Simon & Garfunkel. It is written in 4/4 time and E-flat major. The key signature has three flats (B-flat, E-flat, A-flat). The piece begins at measure 89 with a double bar line and a repeat sign. The first staff (measures 89-94) features a bass line starting on G2, with a repeat sign at measure 92. Above measure 92 is a box containing 'L' and 'E♭'. The second staff (measures 95-96) continues the bass line, with chords Fm7, B♭, E9, E♭, Fm7, and B♭7 indicated above the notes. The third staff (measures 97-102) shows a more complex bass line with eighth and sixteenth notes, including a triplet of eighth notes in measure 97. The fourth staff (measures 103-104) ends with a double bar line and a repeat sign, with a '2' indicating a second ending.